



# THE MANOR

RESIDENCES



## Welcome to The Manor

A contemporary townhouse located in the Tse Addo area in Accra. The property combines optimal land use and masterful design to utilise a 100x100 feet plot area, to put up three opulent 3-bedroom homes just minutes away from the Kotoka International Airport and the beautiful Accra shorelines.

02





*“Home is where the heart is.”*



## — Get Cozy —

We believe that air flow circulation and effective use of daylight create living spaces with a feeling of comfort, warmth, and relaxation and reduces dependence on artificial lighting and cooling; our reason for using clear, openable windows throughout the design.



# — Space All Around —

With a staff quarters, car port for 3 cars, a dip pool, and a fairly sized front yard where one can enjoy gatherings along with shared semi-detached security posts without compromising on room sizes on the ground floor.







— *Enjoy Nature* —

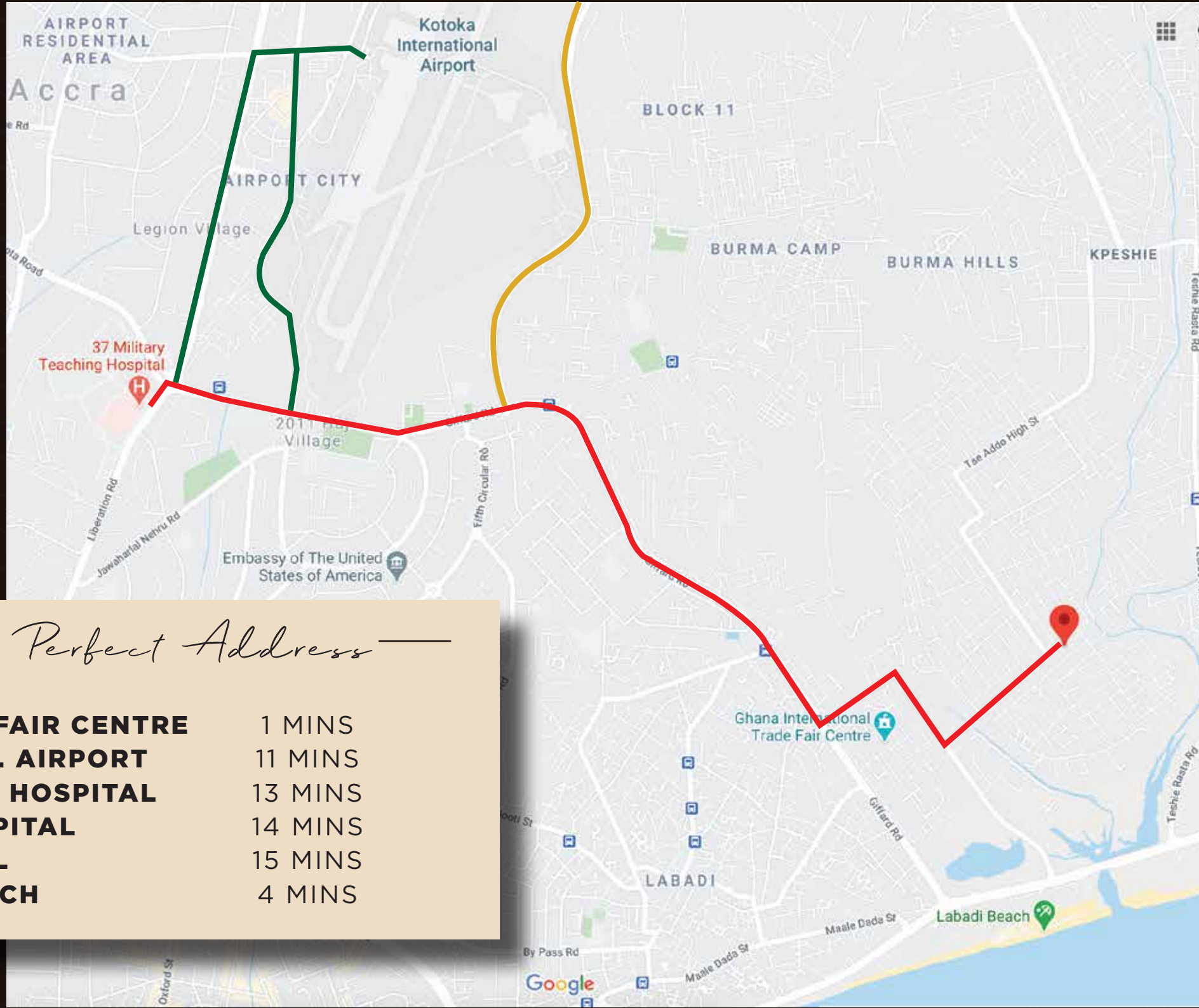
The hollowed out balcony on the first floor and a planter adjacent the front terrace to allow small trees to grow through gives upper floors a share of greenery, a dip pool that flanks the house and provides a good opportunity to cool off on hot days, a spacious kitchen yard that enables outdoor cooking and relaxation, among others, create an increased sense of comfort and coziness.



## — The Vicinity —

Tse Addo is a bustling, growing locale situated between Labadi and East Airport Hills. This neighbourhood is experiencing a boom in residential development due to the calm family setting in a central part of the city, which allows you easy access to main business district of the country. Families will benefit and enjoy of having several educational institutions - such as Soul Clinic, East Airport International School, Ghana Int. School (GIS), amongst others - and health facilities just a short drive away.





— The Perfect Address —

<b>INT. TRADE FAIR CENTRE</b>	1 MINS
<b>KOTOKA INT. AIRPORT</b>	11 MINS
<b>37 MILITARY HOSPITAL</b>	13 MINS
<b>LISTER HOSPITAL</b>	14 MINS
<b>ACCRA MALL</b>	15 MINS
<b>LABADI BEACH</b>	4 MINS





— *The Solars* | —

Up the stairs, the three en suite bedrooms, all boasting in-built wardrobes and study desks with a family area make up the first floor of the house.





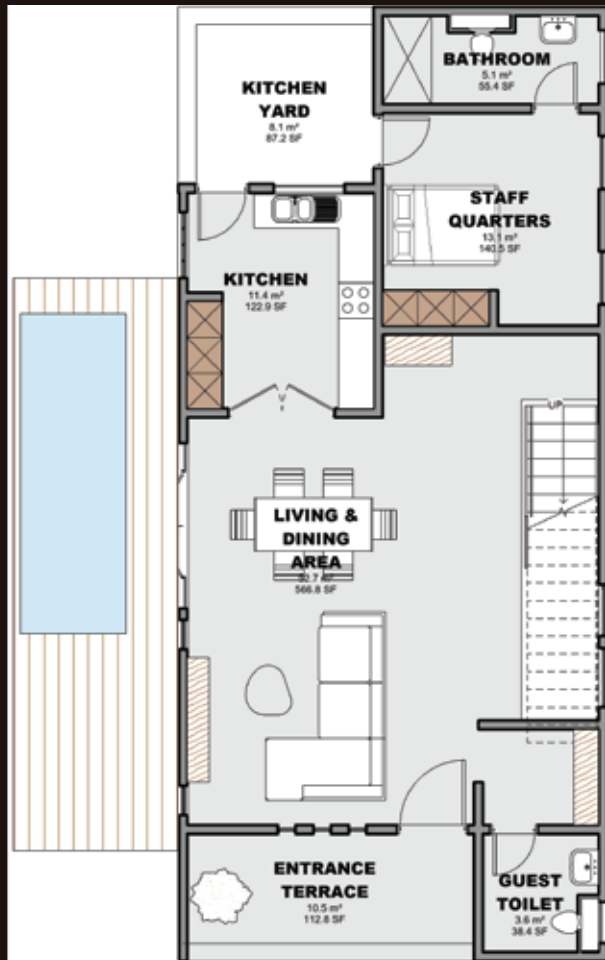
— *The Solars II* —

We believe that air flow circulation and effective use of daylight create living spaces with a feeling of comfort, warmth, and relaxation and reduces dependence on artificial lighting and cooling; our reason for using clear, openable windows throughout the design.





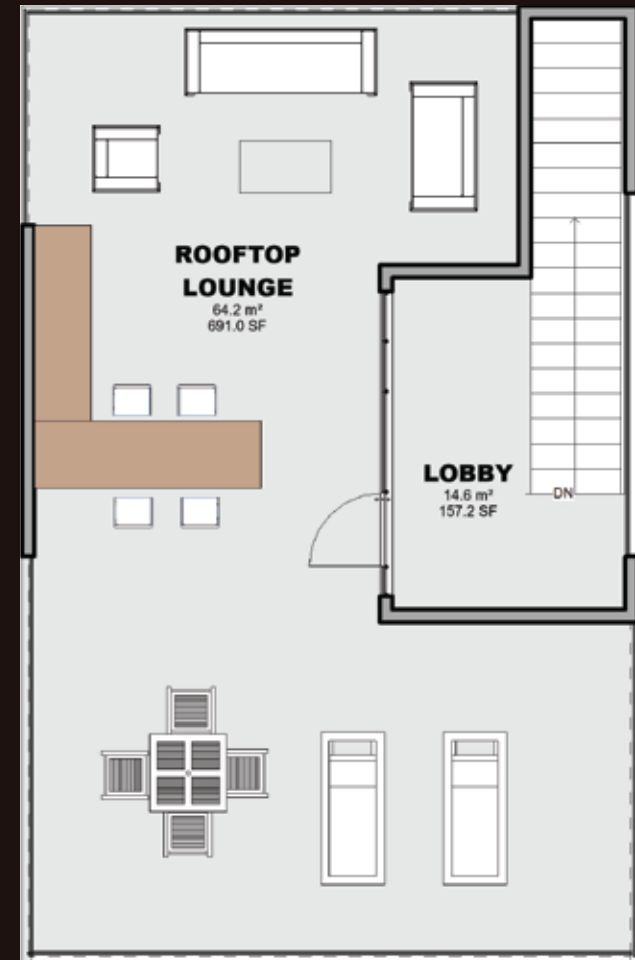
# /Floor Plan/



Ground Floor



First Floor



Rooftop Lounge

# /Price & Features/



**3-Bedroom Detached**

**Starting at  
\$299,000**

## *Extra Features*

- 24-HR CCTV Surveillance
- Standby Generator
- Solar Water Heaters
- Security Post
- Electric Wire Fencing
- Water Storage System



## */Payment Schedule/*

1 <sup>st</sup> Installment	2 <sup>nd</sup> Installment	3 <sup>rd</sup> Installment	4 <sup>th</sup> Installment
<b>40%</b>	<b>30%</b>	<b>20%</b>	<b>10%</b>
When Agreement is signed	Three Months after Day of Purchase	Six Months after Day of Purchase	Upon Completion of Project

**NOTE:** The detached townhouse will be completed for the client within twelve (12) months of first payment,

**Let Us Show You Around.**

TELEPHONE: **+233 53 191 8844**

EMAIL: **info@easifamilyproperties.com**

Developed by:

